

Your trust is our legacy.



crosspoint
real estate



An International
Associate of Savills

Summary

04
Introduction

08
Capital Markets

10
Office Agency

12
Tenant
Representation

14
Investment

16
Industrial &
Logistics

18
Residential

20
Land

22
Project
Management

24
Valuation

25
Research

26
Marketing

27
Our Partners

28
Management
Team



INTRODUCTION

Founded in 2005, Crosspoint Real Estate offers both real estate trading and consulting services, as well as financial solutions needed by large investors, for all types of properties: offices, retail, industrial, land, hotels and residential. Crosspoint Real Estate is the international associate of Savills in Romania, one of the largest real estate companies worldwide, founded in 1855 - with revenues of over GBP 2.24 billion generated in 2023.

Crosspoint Real Estate is one of the top 3 real estate consultancy services companies with 100% Romanian capital, positioned at the forefront of the evolution of this sector, providing specialist insight and advisory, continuously pushing the limits through their achievements, ranking on the business market map as a high-performance player.



Codrin Matei

Principal Partner

“With almost two decades of experience, we are the experts that our clients reliably called upon to advise on some of the largest and most prestigious real estate transactions, and we were always committed to their side of business, with every signed transaction. We grew together all these years, because we had the same objective - more well-developed, modern, and happy communities, no matter the nature of the real estate project that we contributed to. We aim to carry on our local work, to further invest in our expansion and legacy, constantly exceeding our own limits.”

Recognitions & awards



Winner of the Best Local Commercial Real Estate Agency

CROSSPOINT REAL ESTATE
2022



Winner of the Best Land Transaction of the Year

CROSSPOINT REAL ESTATE
PRIMA GROUP, BARBU VACARESCU - 12,289 SQM
2022

KEY HIGHLIGHTS

An International Associate of Savills in Romania

Innovative Marketing & Sales instruments aimed at better addressing customer needs

Solid & healthy development of business lines, according to market challenges & maturation

Experienced senior team, covering all types of property

Quality & value oriented, as reflected in the quality of our clientele and long-term business relations

Strong financial acumen across team members

Entrepreneurial approach & dynamism, enabling fast decision-making and action



OUR **SERVICES**

With a strong financial background, we provide dedicated account teams to drive value via strategic sourcing, reduced operating expenses, reduced capital costs and portfolio optimization actions for our clients.

These services are backed up by global and local market research platforms to maximize the value of real estate assets. Our final goal is to bring added value to the business of our client, and this is what keeps us different in a tough Romanian real estate market.

We use key strengths, values and resources to deliver highest quality services for business across all commercial real estate sectors:

- **Capital Markets**
- **Office Agency**
- **Tenant Representation**
- **Industrial & Logistics**
- **Project Management**
- **Residential & PRS**
- **Land**
- **Investment**
- **Valuation**
- **Research**

Crosspoint Real Estate represents clients and closes deals in all regions of the world, as well as assists international clients in purchasing or renting residential, retail, offices or land plots in Romania.

Through our international exposure and background, we are able to provide our clients with sophisticated financial advisory through the entire process of representation.

INTERNATIONAL NETWORK

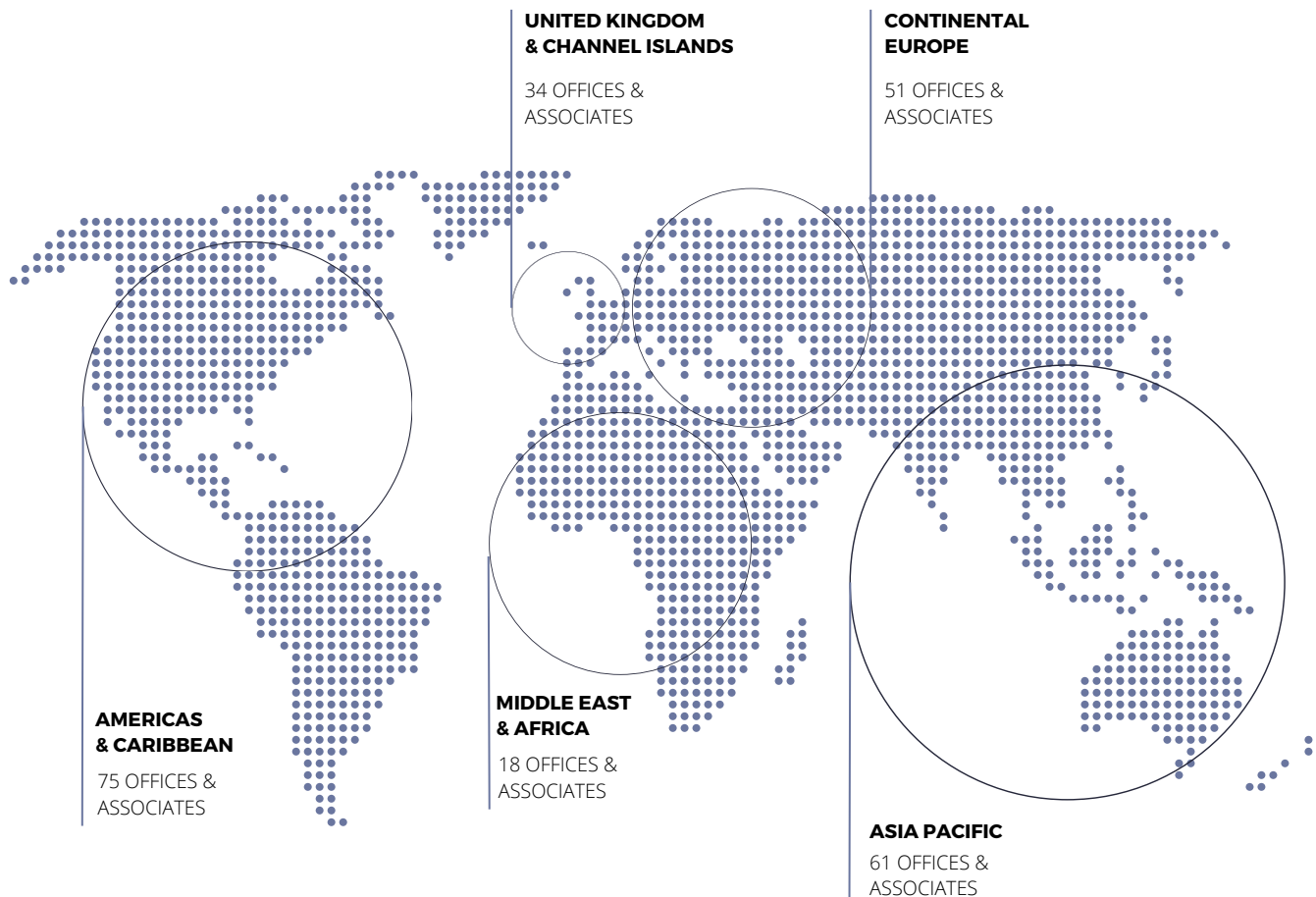
AN INTERNATIONAL ASSOCIATE OF SAVILLS

Savills plc is a global real estate services provider listed on the London Stock Exchange. The company provides consulting services and advice (such as valuation, building consultancy, project management, environmental consultancy, landlord and tenant, planning, strategic projects and research) in connection with commercial, residential and agricultural properties, property-related financial services and investment management, which includes investment management for institutional or professional investors.

Commercial advisory firm Crosspoint Real Estate has formed an association with the international real estate advisor Savills in Romania, in order to support Savills' continued expansion across Central and Eastern Europe (CEE).

Savills operates from over 700 owned and associate offices, employing more than 30,000 people in over 60 countries throughout the Americas, Europe, Asia Pacific, Africa and the Middle East.

Crosspoint Real Estate joins the Savills regional network in the CEE, following the opening of an office in the Czech Republic and the steady expansion of its business in Poland, which currently incorporates four offices and more than 120 employees.



CAPITAL MARKETS

OUR SERVICE RANGE

Crosspoint specialists work with local and international institutions and property investors to identify the best solutions to accelerate the success of their financial portfolio.

DISPOSALS AND ACQUISITIONS



UNDERWRITING ADVISORY



DEAL STRUCTURING



We have created an efficient and broad real estate platform, with a focus on high-quality assets across office, industrial, retail and multi-unit residential asset classes.

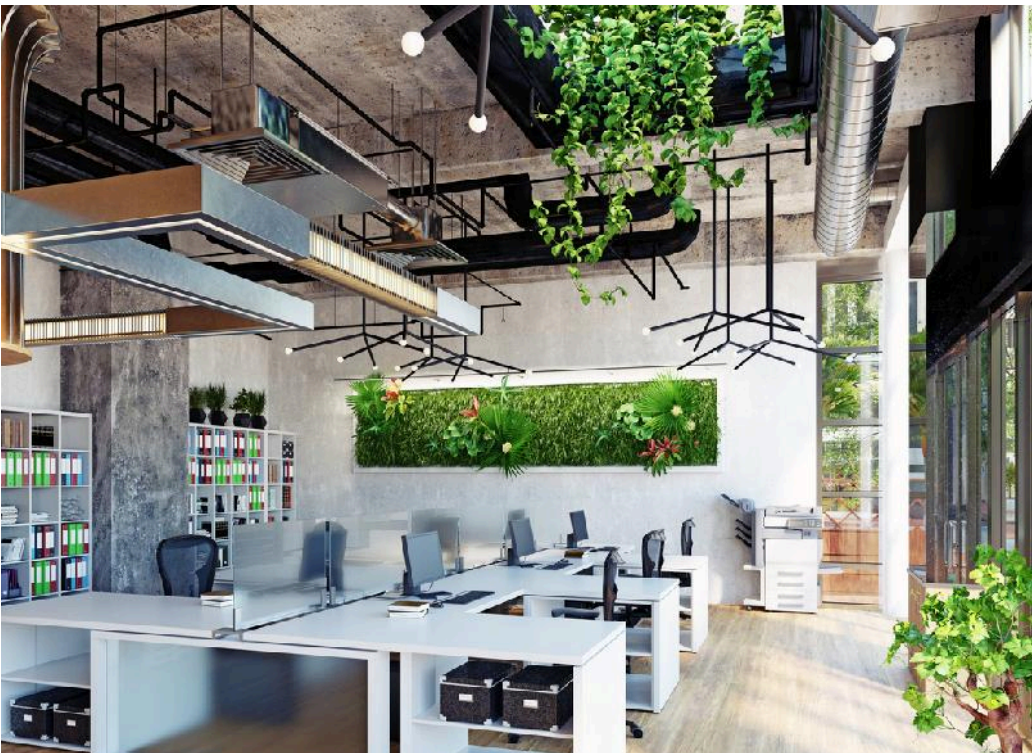
We are able to connect private investors with larger, institutional quality assets, creating access to the broadest selection of qualified buyers in the market place.

RECAPITALIZATION



DEBT AND EQUITY ORIGINATION

BROKER OPINION



SCOUTING MANDATE



OFFICE AGENCY

OUR SERVICE RANGE

Our Office Agency has an excellent client record in providing premium advisory services for both international companies as well as mid-size and large local players.

LANDLORD REPRESENTATION



MARKET RESEARCH OVERVIEW



PROPERTY MARKETING CAMPAIGNS



Either you are an investor, developer, landlord or an occupier of office space, our teams provide a comprehensive range of services and professional advice in order for you to get better value from the property.

Our leasing experts provide market-leading services and advisory around the leasing, disposal and acquisition of vacant leasehold and speculatively built properties.

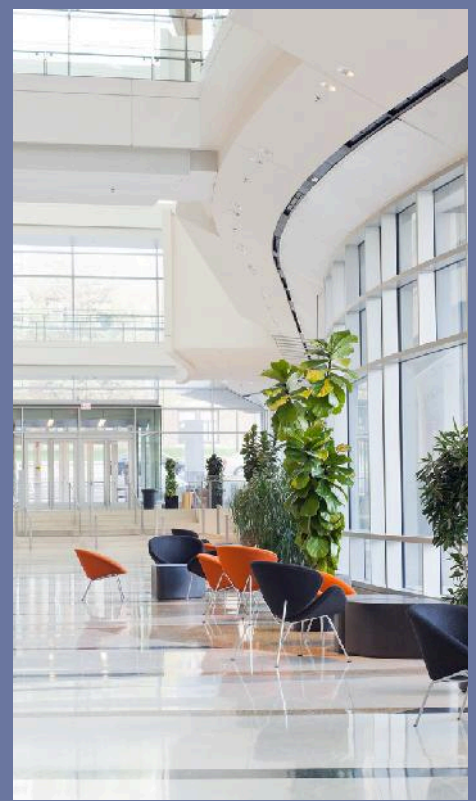
PROPERTY SEARCH AND ACQUISITION



IDENTIFICATION OF TARGET OCCUPIERS



LEASE NEGOTIATION / EXPANSION / REVISIONS



CONCEPT & DESIGN CONSULTANCY



TENANT REPRESENTATION

OUR SERVICE RANGE

With a solid experience on the market, our team represents Tenants through the entire real estate process, providing strategic office market advisory, customized research, options analysis, costs optimization through workspace consultancy, full coordination of the real estate process, be it pre-lease, contract renegotiation, lease extension, relocation or built-to-suit solutions.

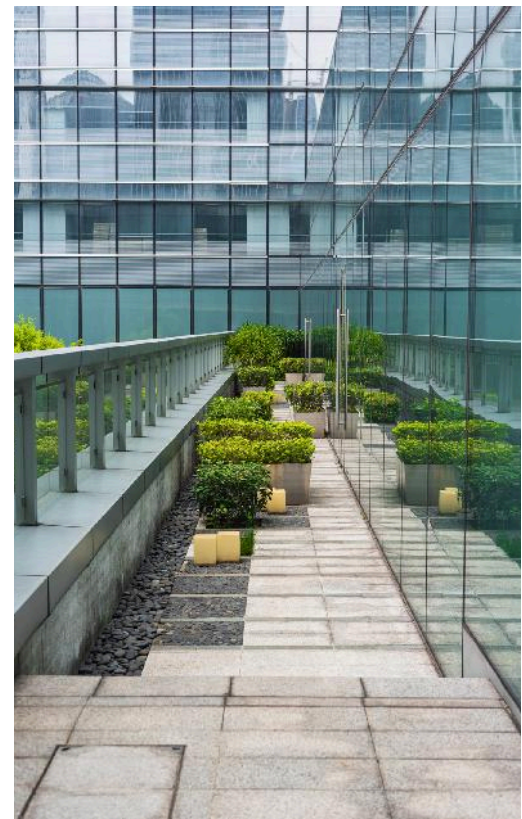
FINANCIAL FORECASTING



NEGOTIATIONS

SITE VIEWINGS & PROPOSALS

PROJECT MANAGEMENT



Our team evaluates market conditions (rental rates, levels of occupancy of an area, Tenant relocations, proposed development and other real estate trends) and develops a leasing strategy and program specific.

We position ourselves as your strategic advisor, minimizing the real estate costs of your property and occupancy risks while maximizing productivity and workplace flexibility.

We'll analyse your business drivers and occupancy needs, identify and evaluate appropriate options, and manage lease negotiations.

STRATEGY DEVELOPMENT



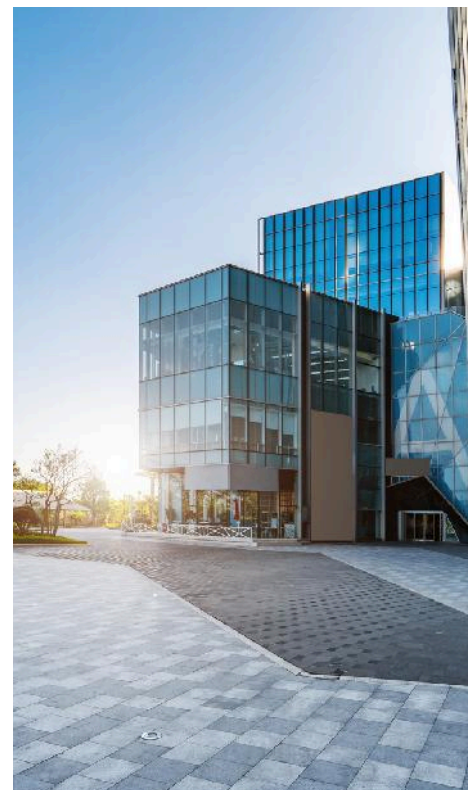
RESEARCH



SPACE PLANNING



WORKSPACE CONSULTANCY



INVESTMENT

OUR SERVICE RANGE

In a highly competitive and maturing market, our Investment and Appraisal team can source products and undertake risk analysis, market and feasibility studies across all property sectors.

**ANALYSIS AND
ADVISORY ON
PROPERTY
CHARACTERISTICS
AND TENANT
PROFILE**



**INVESTMENT
STRATEGY & EXIT
ADVISORY**

**MARKET ANALYSIS
AND DISPOSAL
STRATEGY**



Our area of expertise includes acquisition of existing income producing buildings, ready to occupy buildings or already planned development projects, specialized by client type, geographic coverage and property sector.

In conjunction with our international partners, we are also able to provide advice to funds on structuring and setting up an investment vehicle dedicated to acquiring properties in Romania and CEE.

EQUITY RESTRUCTURING



ACQUISITION ADVISORY

PROPERTY FINANCING ADVISORY



INDUSTRIAL & LOGISTICS

OUR SERVICE RANGE

We have a wide range of available units for sale or lease and an experienced team ready to assist with all the commercial property matters.

LAND ACQUISITION AND DISPOSAL



WAREHOUSE & INDUSTRIAL PROPERTY LEASE



BUILT-TO-SUIT PROJECT CONSULTANCY



We advise a wide range of clients on property acquisition, occupation and ownership strategies, asset management, regeneration, planning, development and building consultancy, stock condition, disposal and management.

Our professionals have the experience and knowledge to meet your industrial business needs for warehousing, distribution, manufacturing and other functionally specialized uses of industrial space across Romania, given the continuous growth of e-commerce globally and demand for same day delivery.

All phases of negotiation are conducted using real-time local, regional, and national data supplied through our database. Our ability to incorporate key elements such as government incentives, workforce analysis, location potential and effective exit strategies allows you to achieve full potential for your real estate assets.

SALE & LEASEBACK



OCCUPIER SERVICES



LANDLORD REPRESENTATION



PROPERTY ACQUISITION & SALE



RESIDENTIAL & PRS

OUR SERVICE RANGE

Whether buying, selling or renting residential property, both local and international clients approach us for trusted advice, be it for diplomatic penthouses in Bucharest or for exquisite villas.

**ONE-STOP SHOP
MARKETING &
SALES OF
RESIDENTIAL
HOUSING**



**ADVISORY
DURING THE
DEVELOPMENT
PHASE**

**PRIVATED RENTED
SECTOR**

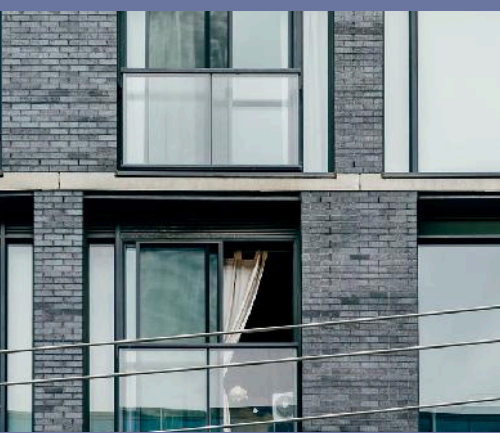
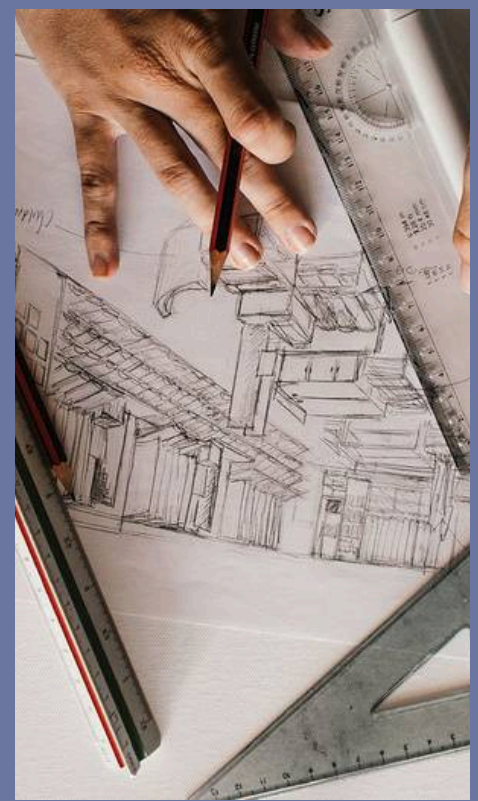
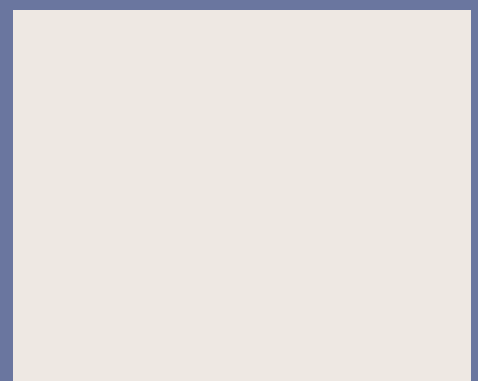
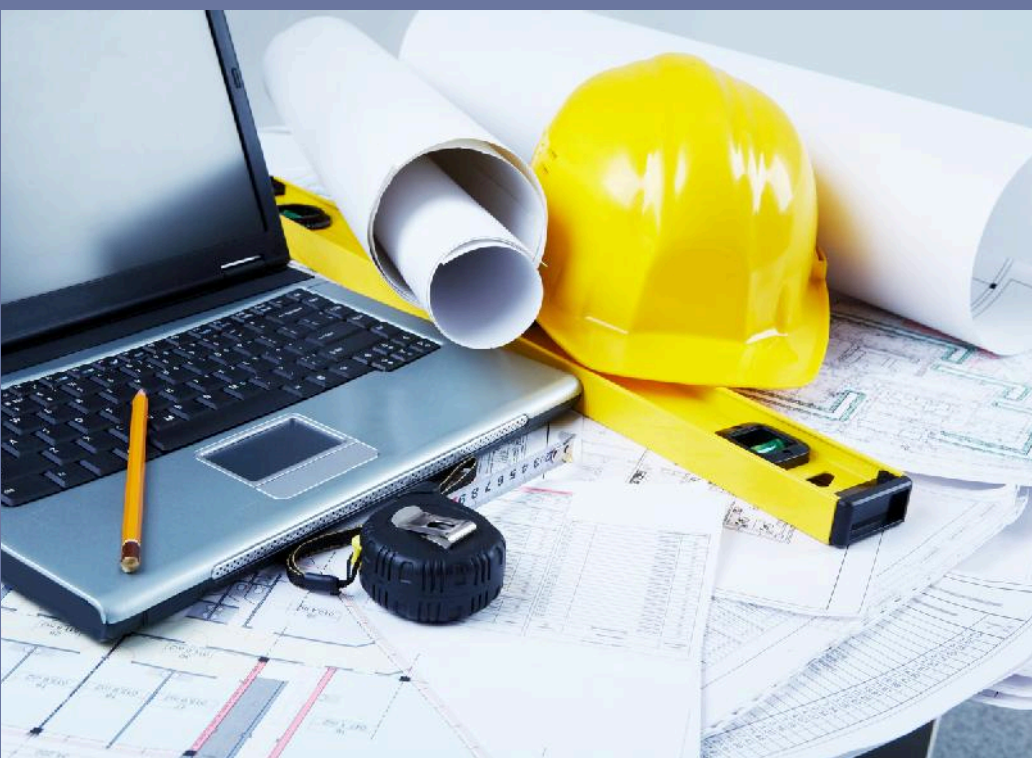


Either you are an investor, developer, landlord or an occupier of office space, our teams provide a comprehensive range of services and professional advice in order for you to get better value from the property.

Our leasing experts provide market-leading services and advisory around the leasing, disposal and acquisition of vacant leasehold and speculatively built properties.

PROPERTY SEARCH AND ACQUISITION

SOURCING FUNDING SOLUTIONS FOR RESIDENTIAL PROJECTS



IN-DEPTH MARKET ANALYSIS

LAND DEVELOPMENT

OUR SERVICE RANGE

If you are an individual investor, a vendor, corporate or developer and you are looking to buy, develop or simply invest in properties, platforms or portfolios, you can partner with our experienced Land Advisory Team, to determine the potential of certain projects and discover innovative ways to diversify your portfolio.

MAPPING/LAND SCOUTING



SITE SELECTION



MARKET ANALYSIS

BEST USE ANALYSIS

First, we identify the right site for you, through a meticulous search, after we perform the analysis of land use scenarios, negotiations, acquisition, disposal and leasing to buyers and sellers of office, retail, industrial, residential and mixed-use properties.

Additionally, you will have access to a full range of related property services and capabilities, with a proven ability to extract performance and create value: investment advisory, agency leasing as well as marketing guidance.

We keep a close relationship with vendors and active investors and we're here to provide you with a wider understanding of the market, including pricing, trends, regulations, and development activity. The blend of experience, research and local "hunting" skills will identify for you one of the best choices in terms of land investment return.

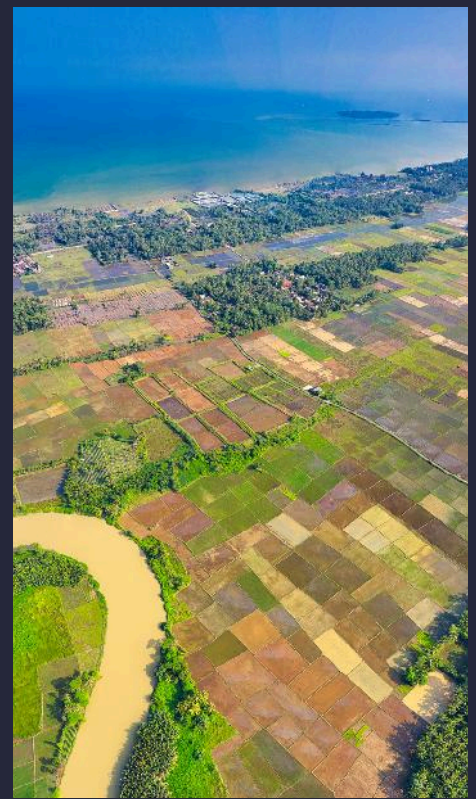
FINANCING OPTIONS



FEASIBILITY STUDIES



SITE PLANNING



PERMITTING



PROJECT MANAGEMENT

OUR SERVICE RANGE

The passion and determination of taking part in the process of turning a vision into a tangible building is the very reason why we have created the company in 2005. When facing a complex real estate project, you need to envision the multitude of variables details along the path, from concept to execution, while avoiding risk.

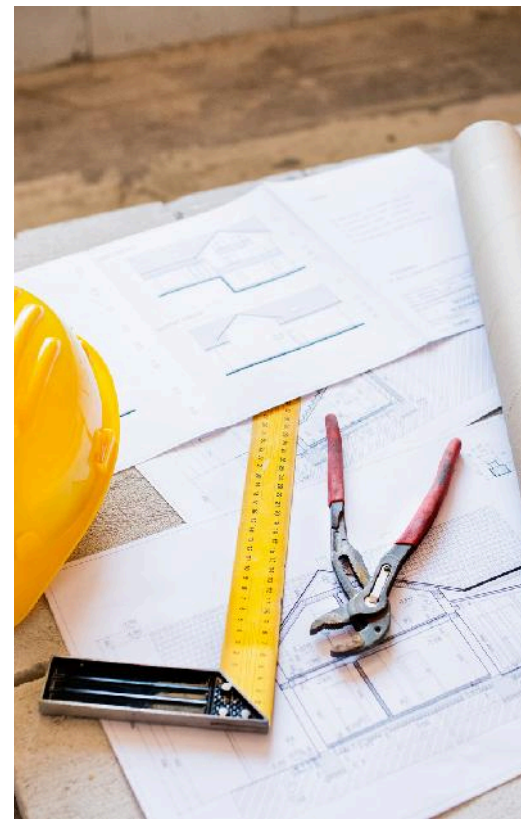
DEVELOPMENT & DESIGN OF NEW PROJECTS



HEALTH & SAFETY MANAGEMENT

SUPERVISING & SITE MANAGEMENT

TECHNICAL DUE DILIGENCE



Our specialists are well versed in the fields of architecture, construction, development, engineering, technology, accounting and property management. As Project Managers, Crosspoint Real Estate specializes in acting as the Client's representative, in defining the brief for developments, and coordinating all the necessary professionals in order to deliver the projects.

By using systematic techniques, our people ensure your projects are implemented flawlessly, while keeping budgets, quality, risk and above all - client satisfaction, can be realized in measurable business terms. We also make sure contractors live up to their commitments, and that everything promised is done right and on schedule.

At any time, we can supply the input of specialists in specific areas, such as engineers, environmental consultants or specialist surveyors engaged in investigating the use of deleterious materials in buildings, to offer the best solution for any investment, development and occupational requirements.

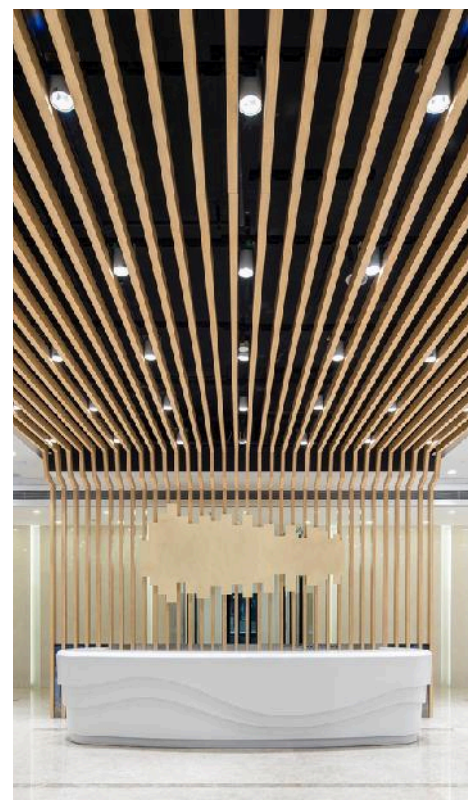
**TECHNICAL
ASSISTANCE
THROUGHOUT THE
EXECUTION OF
CONSTRUCTION
WORKS**



**TECHNICAL
ASSISTANCE AT
THE RECEPTION
OF THE WORKS**



**TECHNICAL
REVIEWS OF
BUILDING
SPECIFICATIONS**



**FEASIBILITY
STUDIES &
LEED GREEN
CERTIFICATIONS**

**MANAGE THE
TECHNICAL
MANUAL OF
CONSTRUCTION**

VALUATION

OUR SERVICE RANGE

Following the successful integration of an existing property valuation platform, Crosspoint Valuation division provides real estate appraisals for a wide range of properties (land, residential, industrial, office, retail, hotel/leisure).

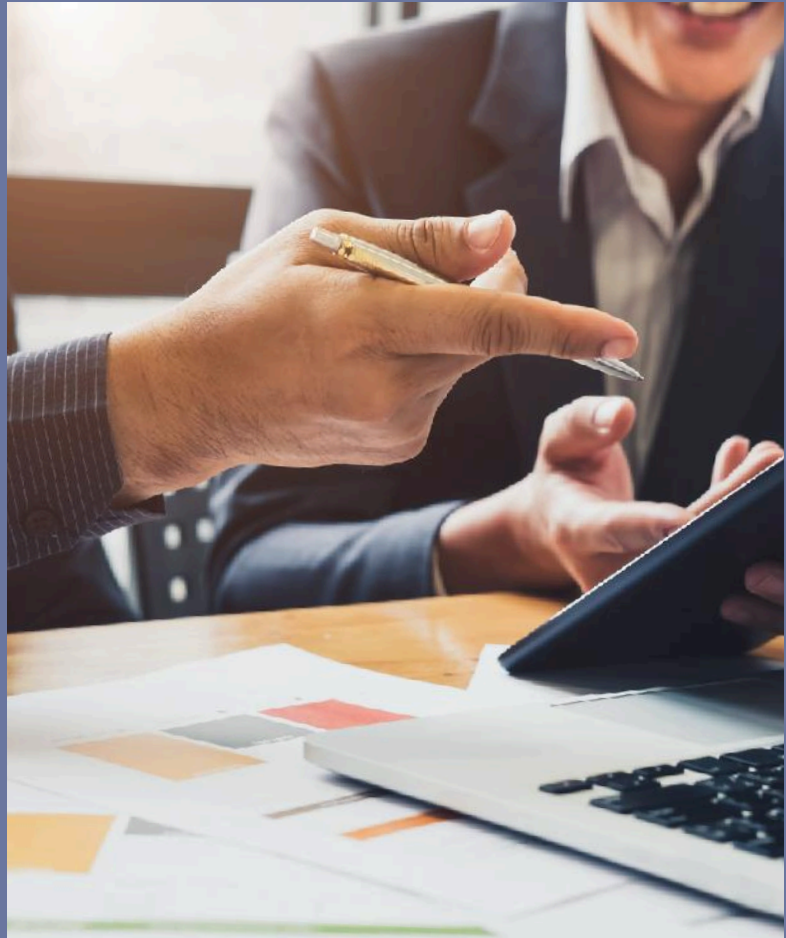
PORTFOLIO VALUATIONS

SPECIAL PURPOSE VALUATIONS

**PROPERTY VALUATIONS:
LAND, OFFICE, RETAIL,
INDUSTRIAL, HOTEL AND
RESIDENTIAL**

**FEASIBILITY & HIGHEST AND
BEST USE STUDIES ON
PROPERTIES, MARKETS AND
LOCATIONS**

**VALUATION OF COLLATERAL
FOR DEBT FINANCES
PURPOSES (INCLUDING IPO'S &
STOCK EXCHANGE LISTINGS)**



All valuation work undertaken by Crosspoint is carried out in accordance with the Code of Practice as laid down by the Royal Institution of Chartered Surveyors (RICS) and locally acknowledged standards (ANEVAR) for a wide range of purposes, ensuring that our work is internationally accepted by investors, financiers and institutions.

INTEGRATED NETWORK DATABASE, AVAILABLE IN REAL TIME (CRM)

2 CHARTERED SURVEYORS (RICS)

ANEVAR CORPORATE MEMBER

TEAM OF 6 MEMBERS WITH OVER 15 YEARS' EXPERIENCE IN VALUATION

Clients turn to us for impartial accurate real estate appraisals on properties ranging from office buildings and retail centers to industrial assets. We carry out valuations of property portfolios for a variety of purposes, including: loan-security, due diligence, debenture, tax, acquisition and disposal, Stock Exchange listing and accounting, for the benefit of property companies, developers, investors (private and institutional) and banks/financial institutions.

RESEARCH

OUR SERVICE RANGE

Crosspoint Research provides in-depth analysis to local and multinational/institutional clients, linking financial advisory to sheer real estate data and sales advisory, as well as the consumption/absorption patterns on the selected sectors of interest.

REAL ESTATE INVESTMENT RESEARCH

**COMMERCIAL REAL ESTATE MARKET
RESEARCH**

**RESIDENTIAL SECTOR PROPERTY
ANALYSIS**

SUPPLY AND DEMAND ANALYSIS

DEVELOPER RATING ANALYSIS

REAL ESTATE MARKET REPORTS

ECONOMIC IMPACT ANALYSIS

DEMOGRAPHIC ANALYSIS

MARKET FORECASTING

**CUSTOMIZED RESEARCH AND
CONSULTING**



Our team corroborates statistical data with market intelligence gathered from our field divisions, to provide valuable insights into the real estate trends, for the use of investors, developers, occupiers and other players interested in real estate.

We elaborate custom research on particular sectors and geographic areas, as well as broader market studies on topics impacting the real estate business.

The company gathers critical data and works closely with other research teams in Europe through the association with international property consultant Savills, providing the clients with vital cross-border information about investment and occupational supply and demand. Through the publication of in-depth research reports and provision of information and data, Crosspoint enables clients to have a significant comprehension of key forces influencing their target markets.

MARKETING & SELLING INSTRUMENTS

Properties are exquisitely put into value through a modern & dynamic web platform, built to offer a reliable browsing and eye-catching experience to the ever-refined modern consumer.

Crosspoint Real Estate's property website (crosspoint-imobiliare.ro) offers buyers and owners the option of customizing their searches, arranging property visits with just a mouse click, including features such as:

PANORAMIC PHOTOS

CLIENT PERSONALIZED ACCOUNT

AERIAL PHOTOS & VIDEOS

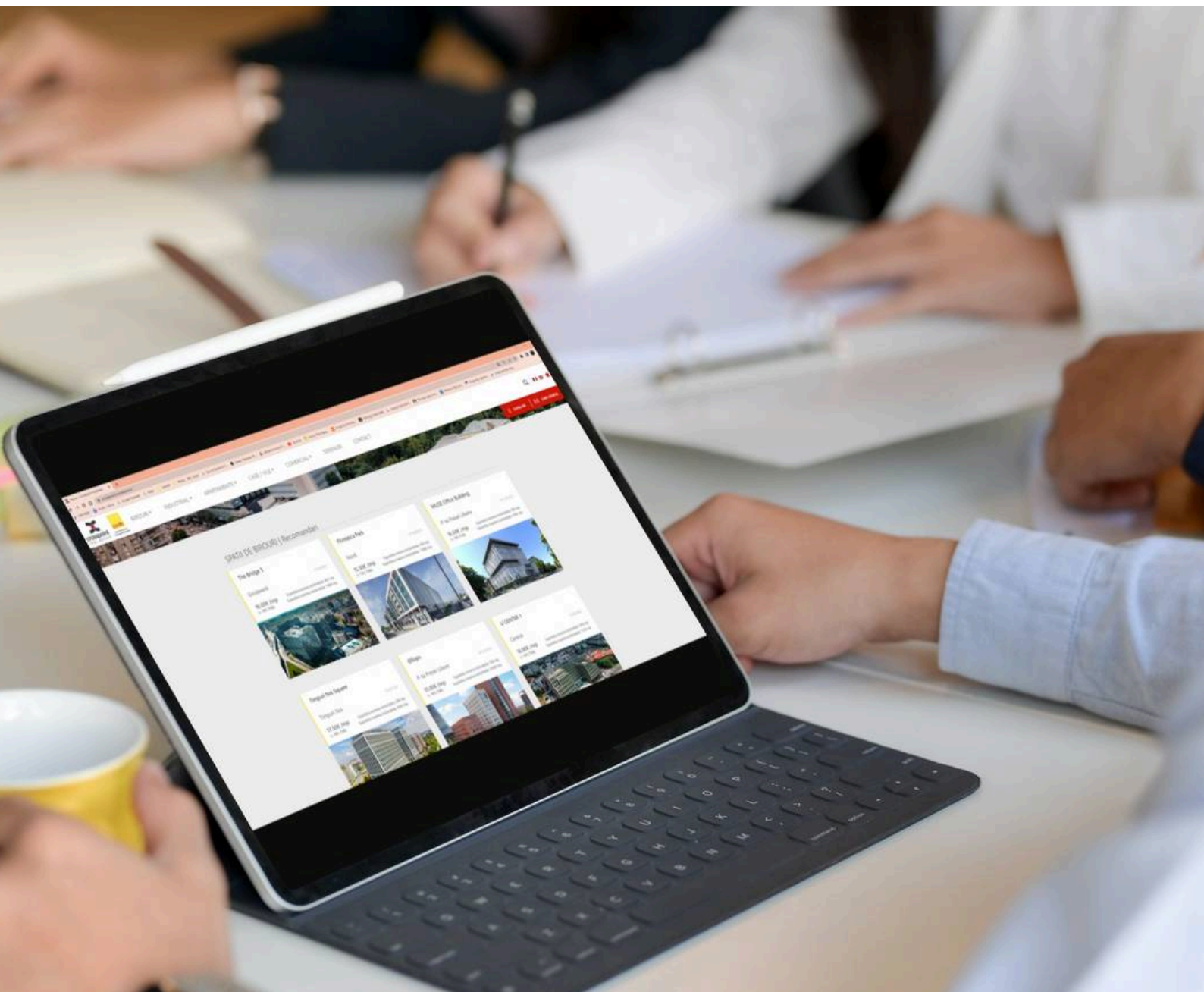
PROFESSIONAL HD VIDEOS & PHOTOS OF PROPERTIES

AI GENERATED CAMPAIGNS

CUSTOMIZED SELECTIONS (BY PRICE, TYPE OF PROPERTY, ETC)

INSTANT UPDATE OF THE BEST DEALS

3D ANIMATIONS & VIRTUAL TOURS



OUR PARTNERS

We are proud to have worked with some of the most important players in the real estate market over the years.



Codrin Matei

Principal Partner

Codrin Matei is co-founder and principal partner of Crosspoint Real Estate. For more than 13 years he has been actively involved in the local and foreign stock markets system, having also acquired an extensive experience in the banking industry, while holding positions within BRD – Groupe Société Générale (corporate clients and high-end individuals).

He has graduated the Academy of Economic Studies, Bucharest, with a major in Business Management followed by a master in Investment Management at the same university.

He is a certified Investment Consultant and holds a certification from London Business School on Corporate Finance.

Between 2015-2017, he was part of the Global Advisory Board for Leading Real Estate Companies of the World (by-invitation-only network, present in over 65 countries, with 565 firms and 130,000 sales associates that transact annually ~ \$368 billion).

“

Everyone needs recommendations because we aren't omniscient. Therefore, I believe in the future of the consultancy market, whichever will be the rules of «the game». In consultancy, as much as in other sectors, the quality is the key, so only the most experienced and professional ones will successfully perform.

”



Mihai Dumitrescu

Managing Partner

Mihai Dumitrescu has been together with Crosspoint Real Estate since 2006, as co-founder and managing partner.

His major contribution to the development of his department brought Crosspoint among the top real estate companies on the market.

Personally, he brokered transactions of more than €150 million, consolidating his position as one of the most valuable individual real estate advisors.

He has graduated the Romanian-American University of Bucharest with a major in International Economic Relations.

“

The engine of any company is the team. We, the management, are just the mechanics that oversee that the engine is fully calibrated, in order to hit its highest performance. My colleagues are part of my family, with whom I share daily joys and challenges. I am proud to be part of this team, to whom I dedicated a lot, but had so much to learn and win from.

”



Cosmin Grecu MRICS

Partner,
Business Development Manager

Cosmin Grecu is a Managing Partner at Crosspoint Real Estate and has been in charge of the valuation and research departments from 2016 until his appointment as Business Development Manager in 2020.

His previous work experience includes development management for Raiffeisen Evolution and business development for Advanced Development.

From 2009 to 2016 he was the managing partner for CENTURY 21 Research and Valuation Romania.

His academic background includes a degree on e-commerce from The Faculty of Cybernetics, Statistics and Economic Informatics at the Academy of Economic Studies, master degree in Electronic Business and E-Commerce, as well as a marketing postgraduate course at the same university.

He is fluent in German and English. He is a member of ANEVAR (The National Association of Authorized Romanian Valuers) and also a member of The Royal Institution of Chartered Surveyors (RICS).

“

Knowledge is indeed power. The name of the game is now Big Data. I strongly believe that the future will belong to those who embrace technology and innovation. The ones that identify smart solutions for optimizing their work will be ahead of their peers.

”



Valentin Neagu

Managing Director

With over 20 years of experience in real estate investments, acquisitions, and industrial developments, Valentin has built a career at the intersection of finance, technology, and property management. He spent a decade in banking specializing in real estate financing and restructuring before taking on leadership roles in commercial real estate.

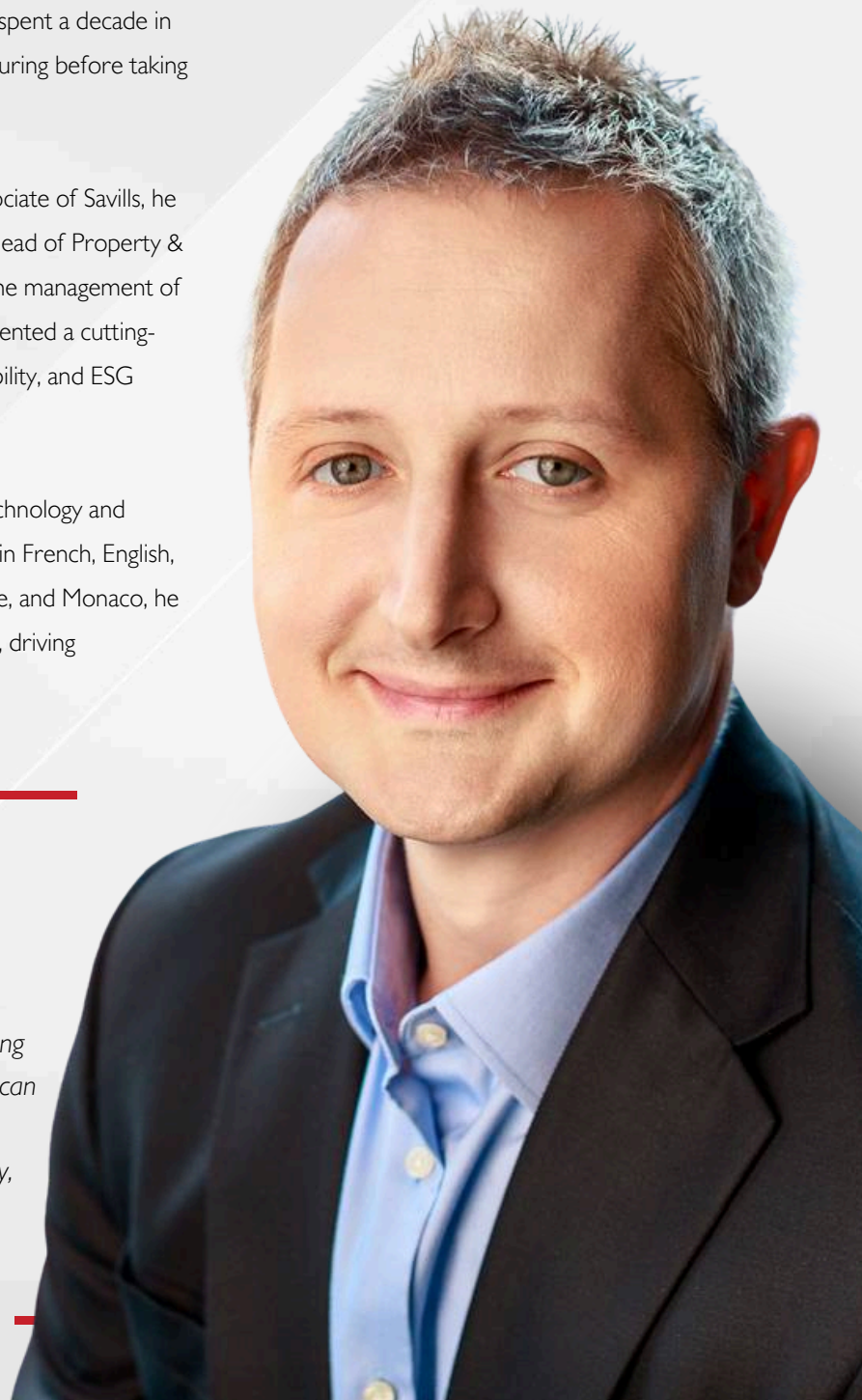
As Managing Director at Crosspoint Real Estate – Associate of Savills, he drives innovation and strategic growth. Previously, as Head of Property & Facility Management at Globalworth Romania, he led the management of 850,000 sqm of office and industrial assets and implemented a cutting-edge Proptech platform, enhancing efficiency, sustainability, and ESG performance across a €3.2 billion portfolio.

A strong advocate for Proptech, Valentin integrates technology and sustainability to optimize real estate operations. Fluent in French, English, and Romanian, with experience across Romania, France, and Monaco, he believes people remain the greatest asset in real estate, driving exceptional results and industry transformation.

“

I have unwavering confidence in the resilience and growth of the real estate market in the near future, driven by evolving consumer needs and a dynamic economic landscape. In this transformation, Proptech stands at the forefront as a powerful catalyst reshaping the industry. However, no technology or market shift can replace the dedication, expertise, and passion of a strong team. It is our people who bring vision to reality, ensuring that every customer experience is not just seamless but truly exceptional.

”



Disclaimer

This document is intended solely for the recipient. All the information contained in this document is confidential, privileged and is provided exclusively for the notification of recipient. The information may not be used, published or redistributed without the prior written consent of Crosspoint Real Estate and in the absence of a contractual relationship. Where this is not compliant, the recipient or any third party using the information contained in this document will be liable for all and any damages resulting from the non-authorised use. The opinions contained herein are expressed in good faith and despite the diligence shown in the selection of this information and the development of this document, Crosspoint Real Estate grants no representations and warranties of whatever nature in respect to this document, including but not limited to the accuracy or completeness of any information, facts and/or opinions contained therein. Crosspoint Real Estate, the directors, employees, associates and agents cannot be held liable for the use and reliance of the opinions, estimates, forecasts, information, data and findings in this document.



www.crosspoint.com.ro

www.crosspoint-imobiliare.ro

GET IN TOUCH WITH US

Ethos House, 240B Calea Floreasca, 3rd floor
014475 Bucharest-2, Romania
Phone: +40 212 32 45 40
office@crosspoint.com.ro





address

Ethos House, 240B Calea Floreasca, 3rd floor
014475 Bucharest-2, Romania
Phone: +40 212 32 45 40
office@crosspoint.com.ro

company website

www.crosspoint.com.ro

property website

www.crosspoint-imobiliare.ro